

IDPH FAST PHACT

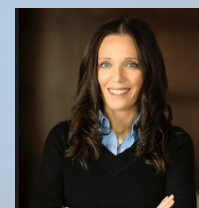
FEATURING



Jennifer Seo, MD, JD
IDPH Pediatric Medicine Medical Advisor



Julia Strehlow, MSW, LCSW
Senior Advisor to the Director, IDPH



Dana Weiner, Ph.D
Chief Officer for Children's
Behavioral Health Transformation



Register for FAST PHACT by
scanning the QR Code or via this
[Registration Weblink](#)

“Back to School, Illinois Children's Health Agenda”

July 17, 2025
12 p.m. – 1 p.m. (CST)

Join us for a series of clinician-directed interactive info-sessions in an office hours format targeted towards raising timely awareness of emerging and high-impact public health issues that directly involve clinical care or health system considerations. All health care professionals are invited to participate.

Experts from IDPH and other agencies will discuss and present on 1 to 2 topics each session with a forum for addressing questions around clinician roles in these situations from triage and testing to reporting and prevention considerations.

Learning objectives:

- Identify IDPH child health priorities.
- Illustrate how the BEACON tool may be used by families to connect with behavioral and mental health services for their child.
- Review key components of the child health examination for school and childcare, including immunizations and lead screening.

Up to one credit hour of Continuing Medical Education credit is available.

The Illinois Department of Public Health (IDPH), Medical Services Division, is authorized to offer formal programs of continuing medical education (CME) to Illinois physicians licensed under (225 ILCS 60/) the Medical Practice Act of 1987. The formal programs must comply with the criteria in subsection (c)(3) of 68 Illinois Administrative Code, Section 1285.110 and all other criteria in this section.

Each licensee is responsible for maintaining records of completion of continuing medical education and shall be prepared to produce the records if requested by the Illinois Department of Financial and Professional Regulation.